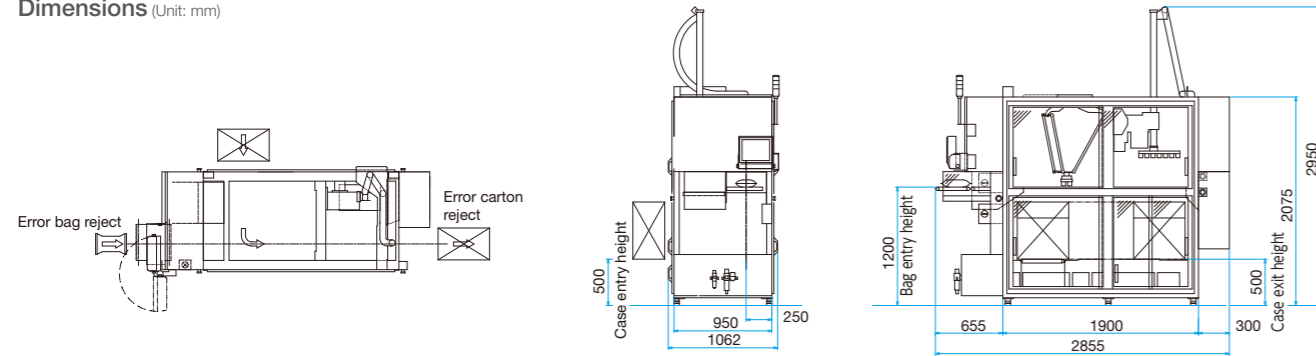


Technical specification



Dimensions (Unit: mm)



Specifications

| | | ACP-601 |
|---------------------------------|----------------------|---|
| Performance | | |
| Speed *1 | | Up to 90bpm (Recommended use in 80bpm) |
| Pack pattern | | Bags laid down Number of rows: 2-10 |
| Product | | Pillow bag |
| Bag size | Width | 120-230mm |
| | Length | 130-350mm |
| | Thickness | 30-70mm |
| | Weight | 10-300g (UP to 1kg is possible with optional support) |
| Carton size | Width | 200-310mm |
| | Length | 280-500mm |
| | Height | 150-400mm (excluding flap) |
| | Flap height | 250-555mm (excluding flap height) |
| | Box transport weight | max 10kg |
| Type | | A flute only |
| Specification | | |
| Power supply | | Three phases AC200V 8.0kW 40A |
| Air consumption | | Less than 60Nℓ/min |
| Machine material | | Painted body |
| Machine protective structure *2 | | IP30 |

*1) Depends on bag size, bag weight, film material and pack pattern. *2) Based on internal test results
* Optional parts are required for heavy bags.

ACP-601

Flexible, complete case packing solution



Related equipment

Seal tester TSC-RVS

Check air leakage and thickness of sealed products.
Flexibly compatible existing lines.



Checkweigher DACS-GN Large series

Ideal for end-of-line inspection.



This catalog has been established in 18/03/2021.
The company name and product name described in this catalog are registered trademarks.
The machine color in this catalog might be differ from the real machine.



ISHIDA CO., LTD. www.ishida.com

44 Shogoin Sannocho, Sakyo-ku,
Kyoto, 606-8392, Japan
Tel: +81 (0)75 751 1618 Fax: +81 (0)75 751 1634

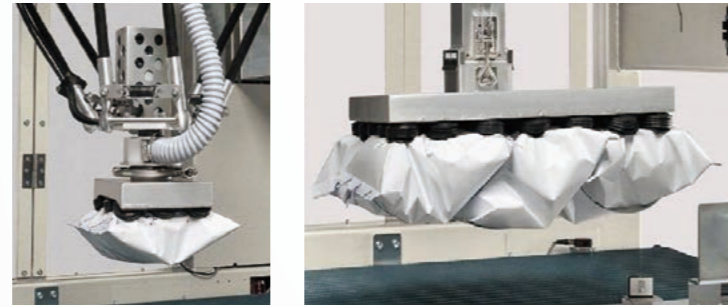
ACP-601 automatic case packer offers high-speed and flexible case packing

One and only case packer which integrates Ishida original delta robot and YZ axis arm

Simple change over

Products can be handled by a variety of suction heads, with maximum load of 1kg per product.

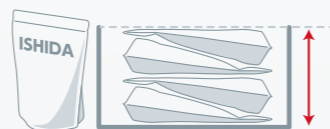
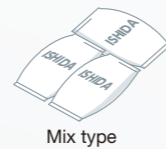
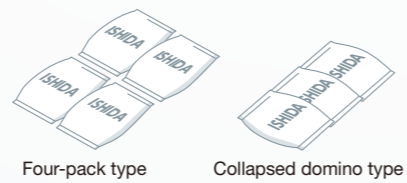
Easily detachable mechanism with tool-less replacement of delta robot and YZ axis arm's suction heads.



When the machine is changing over, each of the mechanical functions are adjusted automatically, with the exception of the suction heads and conveyor guides.



PACK PATTERN SAMPLE

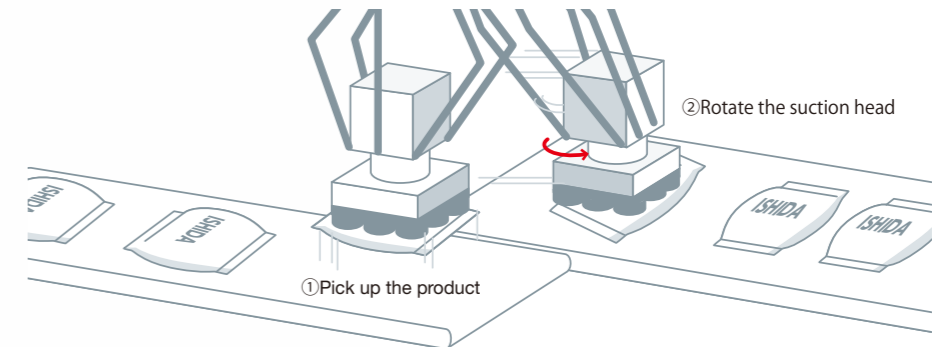


The perfect pack pattern for stand-up pouches efficiently uses carton space.

Various lay down pack patterns with flexible moving delta robot

Delta robot

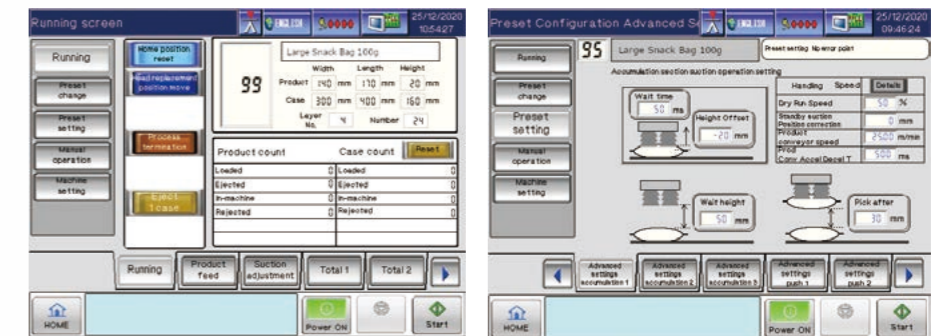
The delta robot and rotatable suction head place the products in the appropriate position. YZ arm places products into case after they are arranged.



ACP-601 enables to find you best shipping solution by packing products flexibly.

Simple and easy operation

By entering pack pattern and product sizes only, Ishida's unique HMI automatically calculates and sets the best machine settings. Anyone can easily operate the ACP-601.



The ACP-601 provides you the best productivity in packing automation.

Increase your productivity to maximum capability by using the ACP-601 Automatic Case Packer. ACP-601 saves on labor costs and increases production efficiency. Prevent contamination and mis-counting of bags.