

Innovation
Commitment
Experience
Precision

Knowledge
Quality
Performance

Ishida IDCS II

Our data capture, processing and display system, now in its second release.

IDCS II will collect data on every single pack that passes across your packing line and make it immediately available in the service of improved profitability.

If you have not used a data collection system before, you will be amazed at the speed with which its intuitive interface and the immense power of the data behind it become part of your business. IDCS II will normally pay for itself within the first few weeks of use.

And if you have, you will greatly appreciate the advantage you gain from professional software designed specifically for your type of business, but readily customisable to produce precisely the data, displays and reports that your unique circumstances call for.

IDCS II will help you perform more profitably and encourage a results-oriented culture. It will enable you to achieve both, while improving integration across your business.

Main new features of IDCS II

- Fully customisable, to meet your exact needs across a wide range of displays and reports
- Works beautifully on desktop computers, laptops, netbooks and touchscreen devices such as tablets
- Exports and emails information to a greater range of well-known formats, including Word, Excel and PDF
- More real-time capability, enabling process adjustments 'on the spot'
- Easy, straightforward installation and upgrade via the web
- Real time alerts and warnings via email or screen
- Fully integrable with SAP, ERP, SCADA
- Direct SQL database access (in read mode only)
- Certified for paperless compliance with weights and measures regulations
- Real Time live updates, have the latest and most advanced system at hand
- No loss of data, full data integrity with syncing capability with checkweighers



Working with you every step of the way

Our extensive R&D investment is directed at meeting the challenges of the fast-changing food industry around the globe.

We aim to support our partners fully, from the very start of the buying process, and you will find many equipment brochures, visual animations and case studies available on our website. When you are ready to make contact, a well-resourced network of Ishida companies, distributors and agents, extending across Europe, the Middle East and Africa, can provide advice and organise demonstrations and trials.

Installation is rapid and efficient. For integrated packing lines, we use proven project management techniques and methodologies, tuned to your key objectives and specifications.

A dedicated pan-European service engineering team helps to maximise the performance, functionality and reliability of our installed base. In addition, spares facilities are strategically placed throughout the territory, offering 24-hour delivery in most cases.



helpline • spares • service • training



ISHIDA EUROPE LIMITED
Kettles Wood Drive
Woodgate Business Park
Birmingham
B32 3DB
United Kingdom
Tel: +44 (0)121 607 7700
Fax: +44 (0)121 607 7888
info@ishidaeurope.com

ISHIDA CZECH REPUBLIC
Tel: +420 317 844 059
Fax: +420 317 844 052
info@ishidaeurope.cz

ISHIDA FRANCE
Tel: +33 (0)1 48 63 83 83
Fax: +33 (0)1 48 63 24 29
info@ishidaeurope.fr

ISHIDA ROMANIA
Tel: +40 (0)21 589 73 52
Fax: +40 (0)21 310 34 22
info@ishidaeurope.ro

ISHIDA RUSSIA AND CIS
Tel: +7 499 272 05 36
Fax: +7 499 272 05 37
info@ishidaeurope.ru

ISHIDA GERMANY
Tel: +49 (0)791 945 160
Fax: +49 (0)791 945 1699
info@ishida.de

ISHIDA SOUTH AFRICA
Tel: +27 (0)11 976 2010
Fax: +27 (0)11 976 2012
info@ishida.co.za

ISHIDA MIDDLE EAST
Tel: +971 (0)4 299 1933
Fax: +971 (0)4 299 1955
ishida@ishida.ae

ISHIDA SWITZERLAND
Tel: +41 (0)41 799 7999
Fax: +41 (0)41 790 3927
info@ishida.ch

ISHIDA NETHERLANDS
Tel: +31 (0)499 39 3675
Fax: +31 (0)499 39 1887
info@ishida.nl



Ishida Data
Capture System

idcs II
It searches out profit

IDCS II Making your data work harder

"Suddenly every gram of overfill was being queried by shop floor staff who until now showed little interest in giveaway statistics."

Helping you perform more profitably

Maximising yield

Whether it's Average Weight versus Target Weight or Frequency of Rejects, IDCS II enables you to spot quickly where product is being wasted or given away. You can respond right away with improved settings, better maintenance or extra training to stop the drain on profits.

A large production order prompts you to consider speeding up your packing line. You want to know how this will affect giveaway. IDCS II will tell you this within seconds of increasing the speed, enabling you to quickly find the optimum settings.

Compare the performance of two machines, or of two different lines, or of day-shift and night-shift: you'll find it easy to achieve, and impressively presentable in a report that's customised exactly as you want it.

Minimising downtime

Graphic real-time displays will show you shift time, operating time, scheduled and total downtime. Causes of downtime can be many and varied, and need to be fully understood if effective countermeasures are to be taken. With IDCS II you can set up all the different factors causing you to lose production time, planned or unplanned, and have daily or weekly reports on the effect of each factor.

Boosting efficiency

OEE (Overall Equipment Efficiency) is perhaps today's best recognised measure of how effectively a manufacturing-packing operation is working.

It is used to identify points where process performance can be improved, and to appraise the scope of improvement possible.

IDCS II represents the ideal way of introducing OEE and its components (Equipment Availability, Equipment Performance and Output Quality) into your business. If your people are already familiar with OEE, IDCS II can improve your results, both short-term and long-term.

As well as impactful, easy-to-read 'meters' of these three components and OEE itself, you can view an ongoing production line 'trace' showing all four parameters in real time. You can also examine a self-updating histogram and an 'OEE Losses' chart. As with all reports in IDCS II, almost infinite flexibility and customisability is the rule, but OEE per shift, total weight, proper weight, total downtime, number of downtime episodes, operating time and effective operating time are available as standard.



Building an efficiency culture throughout your business

Making the data speak

Each piece of production data has something to contribute to your efforts to optimise efficiency. But when you accumulate all the data from every pack that passes through your business, you get some very strong messages indeed. Unfortunately, this vital information is far too often made available only as fragments, or as dull standard reports that never give quite the required information or overall picture.

IDCS II makes sense of it all, adds graphic impact and enables you to configure it your way, to put across precisely the points you wanted to make.

Getting through to the people who matter

IDCS II provides overviews of everything ranging from targets and giveaway to current OEE performance. Depending on their level, managers can compare the performance of individual machines and operators, of day-shifts and night-shifts, of entire sets of sites, and much more.

Operatives can consult robust shop-floor touchscreen displays to view equipment performance, compare different machines or get information on the most likely cause of a stoppage. They can even identify for themselves areas in which further training would improve productivity. Other production staff will be particularly interested in OEE and related efficiency data, while maintenance people will prioritise breakdown and downtime information.



Quality personnel will find it simpler (and more satisfying) than ever before to keep a grip on their critical control points. The more far-sighted among them will also watch trends in areas such as downtime and breakdown, in order to stay ahead of future possible quality problems.

A powerful motivational force

Properly deployed, IDCS II can do more than inform and assist individuals: it can have a powerful effect on the business as a whole or on complete departments.

On many factory floors, IDCS has been used to feed large displays with up-to-the-minute, motivating information. An excellent example is performance with regard to giveaway, with real-time results shown as cash in the local currency. The effects on staff have been remarkable, and lasting.

IDCS Real-time displays include:	IDCS Reports include:
Pack weights histogram	Production
OEE plus Availability, Quality, Performance	Downtime
OEE Losses	OEE
Effective production time	Daily: hourly losses
Quality	Daily: line speed
Average weight	Daily: product by weight
Proper and rejected packs	Batch reports
Customised combinations of the above	Metal contamination

Paperless compliance with MID

With IDCS II, checkweighers no longer need printers. Their data is made available electronically where and when you need it. What's more, when you use IDCS II, you remain in full compliance with the Measuring Instruments Directive (MID) despite having taken this important step towards paperless operation.

Promoting integration, reducing risk

Welding your business more tightly together

IDCS II brings together and makes more widely available information that has all too often been buried in separate parts of the business, on media ranging from hard disks to scraps of printer paper.

It becomes possible to look at and compare lines, sites and even groups of companies using a common approach, bringing increased unity to planning and action. Databases can be made open so that they can readily participate in wider systems such as SAP and SCADA, and can play their full part in enterprise resource planning (ERP).

The data can be made accessible to authorised users anywhere in the world, further promoting unity of approach. Because it is web- rather than disk-based, it removes at a stroke the delays and difficulties once associated with software updating. It also avoids the problem of differences and incompatibilities between software generations that arise when updating is delayed or omitted.

Reducing risk despite a more open system

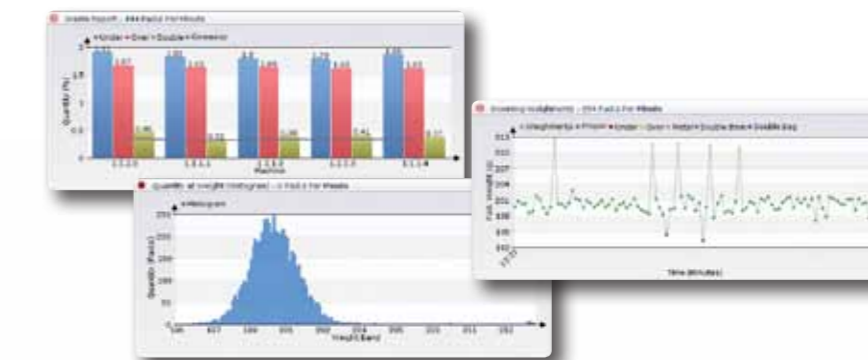
Weight data processed by IDCS II plays an important role in compliance with legislation, while contamination data has even greater legal, reputational and financial implications. The openness and accessibility brought by IDCS II will improve traceability and further reduce risk in these areas.

'Need to know' security levels

Despite its much greater availability, IDCS II data can be password protected at a number of different levels, ensuring that information remains secure in accordance with a company's internal policies.

Avoiding data loss

IDCS II ensures that individual machines store data whenever contact with the server is lost. Once back on line, they automatically update the server, so your data remains intact and comprehensive.



productivity
quality
legal compliance
OEE
security
clarity

cost savings
flexibility
efficiency
ERP/SCADA
paperless