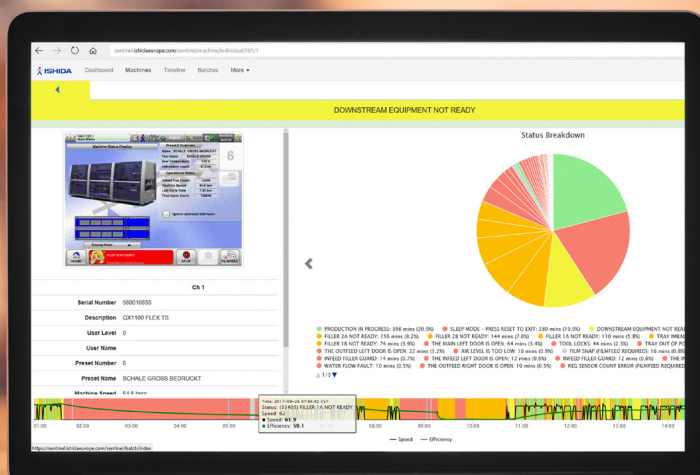


INDUSTRY 4.0: HOW ADVANCED TECHNOLOGIES CAN MAXIMISE EFFICIENCIES

Industry 4.0 is a topic high on the news agenda, tracking the changes that technology is bringing primarily to engineering and manufacturing. Businesses are increasingly looking at implementing smarter technology for data capture, streamlining operations and automating many processes, and this is where Ishida's product range and intelligent solutions can give businesses a competitive advantage.



Automation

Increasingly, businesses are automating processes that were previously carried out manually, and there is more technology available than ever before to allow businesses to capture — and analyse — data in their production facilities.

Automating systems can reduce the manual operation and intervention required, in turn reducing overheads or enabling the investment of staff in other areas of the business. Automating a process can ensure an identical output each and every time, and remove the possibility of human error in a production line.

Data capture & analytics

The old adage 'knowledge is power' is truer than ever when it comes to data capture and analytics. The availability of detailed information can also be invaluable for companies in order to manage their operations more profitably. Businesses need to know exactly how much it costs to get a product or pack out of the factory, and be able to easily identify bottlenecks in production and areas where there are opportunities for improvement.

Capturing data allows companies to monitor remotely rather than deploying staff simply to monitor the systems; staff that could be better used elsewhere. The reporting from the data gives businesses that competitive advantage of being able to optimise production and work as efficiently as possible.



Equipment integration

The ability of newer systems to integrate means that businesses could incorporate multiple pieces of equipment, not only streamlining processes but enabling the capture of data from multiple areas of the production line to build a more complete picture. This allows a company to be proactive rather than reactive when it comes to improving practices or methods, by using comprehensive reporting to give a breadth of information.

An example of this is Ishida's integrated checkweigher combination units which now encompass detection, integrated metal detectors and reject systems, and can optimise throughput without compromising on managing risk – crucial for business reputation and for consumer safety.



Checkweighing of ice cream tubs at Florida Eis factory in Berlin

These state-of-the-art checkweighers provide space-saving multifunctional solutions, touch screen capability to ensure ease-of-use, and integration with additional equipment to give the business complete control over the production line.



DACS checkweigher touch screen



Ishida Sentinel™ Remote Line Monitoring system report

Remote line monitoring

The ability to remotely monitor systems can bring a multitude of benefits to a business. Ishida's Sentinel™ software gives customers advanced remote access to production lines enabling reporting, monitoring and remote intervention, enabling production statistics and reports from real-time processes to be accessed without compromising the privacy or safety of the business or the production site.

By deploying a monitoring system like Sentinel, businesses can access performance metrics, batch data and even web cam footage remotely, and full reports can be pulled off in real-time to give businesses vital information.

This system can be integrated with existing Ishida equipment to futureproof a production line and allow a business a more proactive approach with regards to its data capture and its maintenance.

Investment and scalability

Businesses can be tempted to run cap-ex investments until the very end of life, and whilst this can be viewed as maximising the current spend, businesses should explore how specifying new technology can bring more substantial long-term cost savings and a faster return on investment.

It's important to remember that advanced technology is not only applicable to large scale companies. In fact, smaller businesses, even those with just a single line, can benefit just as much from integrated processes, in-depth data and information transparency to help them maximise profitability and provide the foundations for further growth.

The benefits of using advanced technologies can help SMEs grow, through the fast return on investment, allowing them to reinvest that capital in additional production lines or growing their premises.

Competitive advantage

When looking to implement advanced technology and the potential of transforming into a 'smart factory', it's crucial for businesses to partner with a market-leader in automated solutions. Having an experienced partner that understands the food production industry and is focused on delivering intelligent, complete solutions to its customers is vital and Ishida Europe prides itself on its comprehensive offering.

For more information on how Ishida Europe can help prepare your business for Industry 4.0 or to implement advanced technologies, please contact Ross Townshend by emailing ross.townshend@ishidaeurope.com